



BOROUGH OF MOUNTAIN LAKES

LISTED IN NATIONAL AND STATE REGISTERS OF HISTORIC PLACES

Borough of Mountain Lakes Trash & Recycling Services Effective January 1, 2023

Effective January 1, the Borough's new solid waste contract will go into effect. Below is a description of our new trash and recycling services. Several factors, including resident input, cost, ease and quality of services, sustainability, and community aesthetics, were considered in developing the Borough's new solid waste program. Thank you to our residents for your valuable feedback on our Solid Waste Survey and to the Solid Waste Advisory Committee for working with the Borough on this important task.

AT A GLANCE

- Weekly trash and recyclables collection will continue to be a homeside service.
- The green bag program is being eliminated. There will be a standard trash allotment instead.
- There will be a sticker system for disposal of excess trash.
- Residents who currently have Friday collection of trash and recyclables will move to Wednesday or Thursday collection.
- If residents have extra green bags, they can use them instead of a sticker to dispose of excess trash or sell them back to the Borough through May 2023.
- Recyclables collection will move to an alternating week schedule: Cardboard & Paper collected one week; Plastics, Glass & Metals (Commingled) collected the next week.
- Quarterly Curbside Bulk Trash Collection is a new service that will replace the twice/year bulk trash days at the DPW Recycling Center.

ELIMINATION OF GREEN BAG PROGRAM. STANDARD TRASH ALLOTMENT.

Starting in January, green bags will no longer be required for trash disposal. Instead, place your trash into any trash bags you choose, with a standard weekly allotment per household equivalent to two standard-sized trash cans (approx. 30-35 gallons in size), not exceeding fifty pounds each.

If you have extra green bags and want to sell them back to the Borough, there will be a buy-back program for unused rolls of bags (no single bags!) at Borough Hall through May 2023.



STICKER PROGRAM FOR EXCESS TRASH.

If you have trash in excess of the standard allotment, you may continue to use any green bags you have on hand to dispose of it or purchase stickers from Borough Hall. Stickers will cost \$2.50 each. One sticker is required for each extra bag of trash (max 50lbs each bag). Place the sticker on the top of your bag so it is visible.



TRASH & RECYCLABLES COLLECTION DAY CHANGES.

Solid waste collection will move to a 4 day/week schedule. **This change only affects residents whose current pick-up day is Friday.** See enclosed map for your collection schedule.

- If your current collection day is FRIDAY and you live west of the Boulevard, your new collection day will be WEDNESDAY
- If your current collection day is FRIDAY and you live east of the Boulevard, your new collection day will be THURSDAY

ALTERNATING WEEK COLLECTION OF RECYCLABLES.

The Borough is moving to a new collection schedule for recyclables. Paper & Cardboard will be picked up one week; Plastics, Glass & Metals (Commingled) will be picked up the following week. Moving to this new schedule will save taxpayer dollars (by making collection more efficient) and reduce the contamination of recyclables (which makes them more valuable to the Borough). The Borough Recycling Center is an option for dropping off recyclables between collection days. See enclosed calendar for your 2023 collection schedule.

NEW SERVICE: QUARTERLY CURB-SIDE BULK TRASH COLLECTION

The Borough is adding quarterly curb-side bulk trash collection as a new service. More details, including the 2023 bulk trash collection schedule, will be shared in the new year. This service will replace the twice/year Bulk Trash Days at the Borough's Recycling Center.

QUESTIONS? Visit www.mtnlakes.org/recycle to learn more or contact the Mountain Lakes Department of Public Works at 973-334-1577.

HomeSide Recycling Collection

Recyclables (along with your regular trash) should be put out for pickup by 7AM on your weekly collection day by the side of your home or garage in the appropriate containers. Contaminated recycling can cause an entire load of recyclables to be rejected, at a significant cost to Borough taxpayers, so please follow these guidelines carefully.

**Do not put
recyclables
in plastic
bags!**

When in Doubt, Throw It Out!

Plastics, Glass & Metals (Commingled)

Plastic, glass & metal recyclables can be mixed together and placed in a rigid reusable container such as a recycling bin or garbage can. Each container should be no more than 50 pounds in weight or 30-35 gallons in size. Recyclables must be clean, empty & dry.

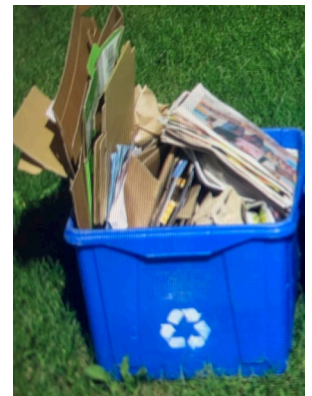
- ✓ **#1, #2, #5 Plastics:** Plastic bottles, jars, jugs & other rigid plastic containers. Flatten your plastic containers to save space. No lids!
- ✓ **Glass:** Clear, amber & green bottles and jars
- ✓ **Metals:** Metal cans, can lids, bottle caps, clean aluminum dishes & foil
- ✓ **Aseptics:** Milk cartons & juice boxes
- ✗ **UNACCEPTABLE Items:** Plastic bags, plastic wrap, plastic lids, windowpanes, mirrors, ceramics, pyrex, drinking glasses, aerosol cans and VCR/VHS tapes.



Paper & Cardboard

All paper & small cardboard must be placed in a recycling bin or paper bag, or tied in small bundles. Corrugated cardboard must be **FLATTENED**. Large pieces of cardboard may be placed outside of your recycling container.

- ✓ Corrugated Cardboard (flattened)
- ✓ Newspapers, magazines, junk mail, and clean paper bags
- ✓ Envelopes with or without windows
- ✓ Cracker, cereal & frozen food boxes
- ✓ Manila folders & spiral notebooks
- ✓ Sticky notes, postcards & greeting cards
- ✓ Non-metallic wrapping paper
- ✗ **UNACCEPTABLE Items:** Shredded office paper, food contaminated paper, including **greasy pizza boxes**, Tetra Pak cartons, padded envelopes, waxed cardboard & paper, paper towel & napkins, tissue paper, metallic wrapping paper, blueprint paper, construction paper, self-adhesive labels.



Visit <http://www.mtnlakes.org/recycle> to learn more.

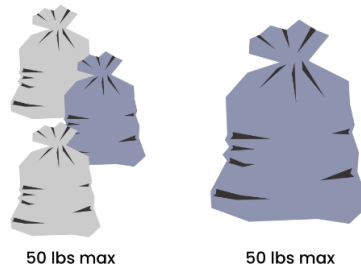
HomeSide Trash Collection

Household trash (along with your recyclables) should be put out for pickup by 7AM on your weekly collection day by the side of your home or garage in the appropriate containers. Starting January 2023, green bags will no longer be required for trash disposal. Instead, place your trash into any trash bags you choose, with a standard weekly allotment per household equivalent to two standard-sized trash cans (approximately 30-35 gallons in size), not exceeding fifty pounds each.

The standard trash allotment per household is two 30-35 gallon cans, weighing a max of 50 pounds each

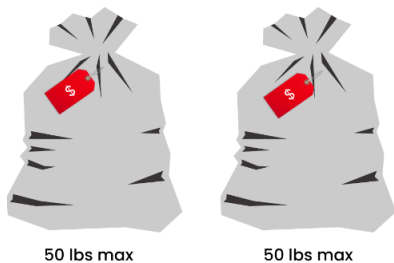


Trash bags do not need to be put in a garbage can, but need to meet these same weight restrictions



STICKER PROGRAM FOR EXCESS TRASH: If you have trash in excess of the standard allotment, you may continue to use any green bags you have on hand to dispose of it or purchase stickers from Borough Hall. Stickers cost \$2.50 each. One sticker is required for each extra bag of trash (max 50lbs per bag). Place the sticker on your bag visibly.

If you have trash in excess of the standard allotment, you can purchase stickers from the Borough to dispose of it



You also can use any green bags you still have on hand (instead of a sticker) to dispose of excess trash





BOROUGH OF MOUNTAIN LAKES 2023 RECYCLING PICKUP CALENDAR

This calendar is also available at www.mtnlakes.org/recycle.



PLASTICS, GLASS & METALS (COMMINGLED)



These recyclables may be mixed together & placed in a rigid reusable container such as a recycling bin or garbage can. RECYCLABLES MUST BE CLEAN, EMPTY & DRY.
Put your Commingled Recyclables out for collection on the brown week.

PAPER & CARDBOARD

Place these recyclables in a recycling bin or paper bag, or tie in small bundles. Corrugated cardboard must be FLATTENED.

Put your Paper & Cardboard recyclables out for collection on the blue week.



JANUARY 2023

	S	M	T	W	T	F	S
Paper	1	2	3	4	5	6	7
Commingled	8	9	10	11	12	13	14
Paper	15	16	17	18	19	20	21
Commingled	22	23	24	25	26	27	28
Paper	29	30	31				

FEBRUARY 2023

	S	M	T	W	T	F	S
Paper				1	2	3	4
Commingled	5	6	7	8	9	10	11
Paper	12	13	14	15	16	17	18
Commingled	19	20	21	22	23	24	25
Paper	26	27	28				

MARCH 2023

	S	M	T	W	T	F	S
Paper				1	2	3	4
Commingled	5	6	7	8	9	10	11
Paper	12	13	14	15	16	17	18
Commingled	19	20	21	22	23	24	25
Paper	26	27	28	29	30	31	

APRIL 2023

	S	M	T	W	T	F	S
Paper							1
Commingled	2	3	4	5	6	7	8
Paper	9	10	11	12	13	14	15
Commingled	16	17	18	19	20	21	22
Paper	23	24	25	26	27	28	29
Commingled	30						

MAY 2023

	S	M	T	W	T	F	S
Commingled		1	2	3	4	5	6
Paper	7	8	9	10	11	12	13
Commingled	14	15	16	17	18	19	20
Paper	21	22	23	24	25	26	27
Commingled	28	29	30	31			

JUNE 2023

	S	M	T	W	T	F	S
Commingled					1	2	3
Paper	4	5	6	7	8	9	10
Commingled	11	12	13	14	15	16	17
Paper	18	19	20	21	22	23	24
Commingled	25	26	27	28	29	30	

JULY 2023

	S	M	T	W	T	F	S
Commingled							1
Paper	2	3	4	5	6	7	8
Commingled	9	10	11	12	13	14	15
Paper	16	17	18	19	20	21	22
Commingled	23	24	25	26	27	28	29
Paper	30	31					

AUGUST 2023

	S	M	T	W	T	F	S
Paper			1	2	3	4	5
Commingled	6	7	8	9	10	11	12
Paper	13	14	15	16	17	18	19
Commingled	20	21	22	23	24	25	26
Paper	27	28	29	30	31		

SEPTEMBER 2023

	S	M	T	W	T	F	S
Paper						1	2
Commingled	3	4	5	6	7	8	9
Paper	10	11	12	13	14	15	16
Commingled	17	18	19	20	21	22	23
Paper	24	25	26	27	28	29	30

OCTOBER 2023

	S	M	T	W	T	F	S
Commingled	1	2	3	4	5	6	7
Paper	8	9	10	11	12	13	14
Commingled	15	16	17	18	19	20	21
Paper	22	23	24	25	26	27	28
Commingled	29	30	31				

NOVEMBER 2023

	S	M	T	W	T	F	S
Commingled				1	2	3	4
Paper	5	6	7	8	9	10	11
Commingled	12	13	14	15	16	17	18
Paper	19	20	21	22	23	24	25
Commingled	26	27	28	29	30		

DECEMBER 2023

	S	M	T	W	T	F	S
Commingled						1	2
Paper	3	4	5	6	7	8	9
Commingled	10	11	12	13	14	15	16
Paper	17	18	19	20	21	22	23
Commingled	24	25*	26	27	28	29	30
Paper	31						

*Our only scheduled non-service day is Christmas Day.

If your normal collection day falls on 12/25, put your recyclables and trash out the next day for collection.

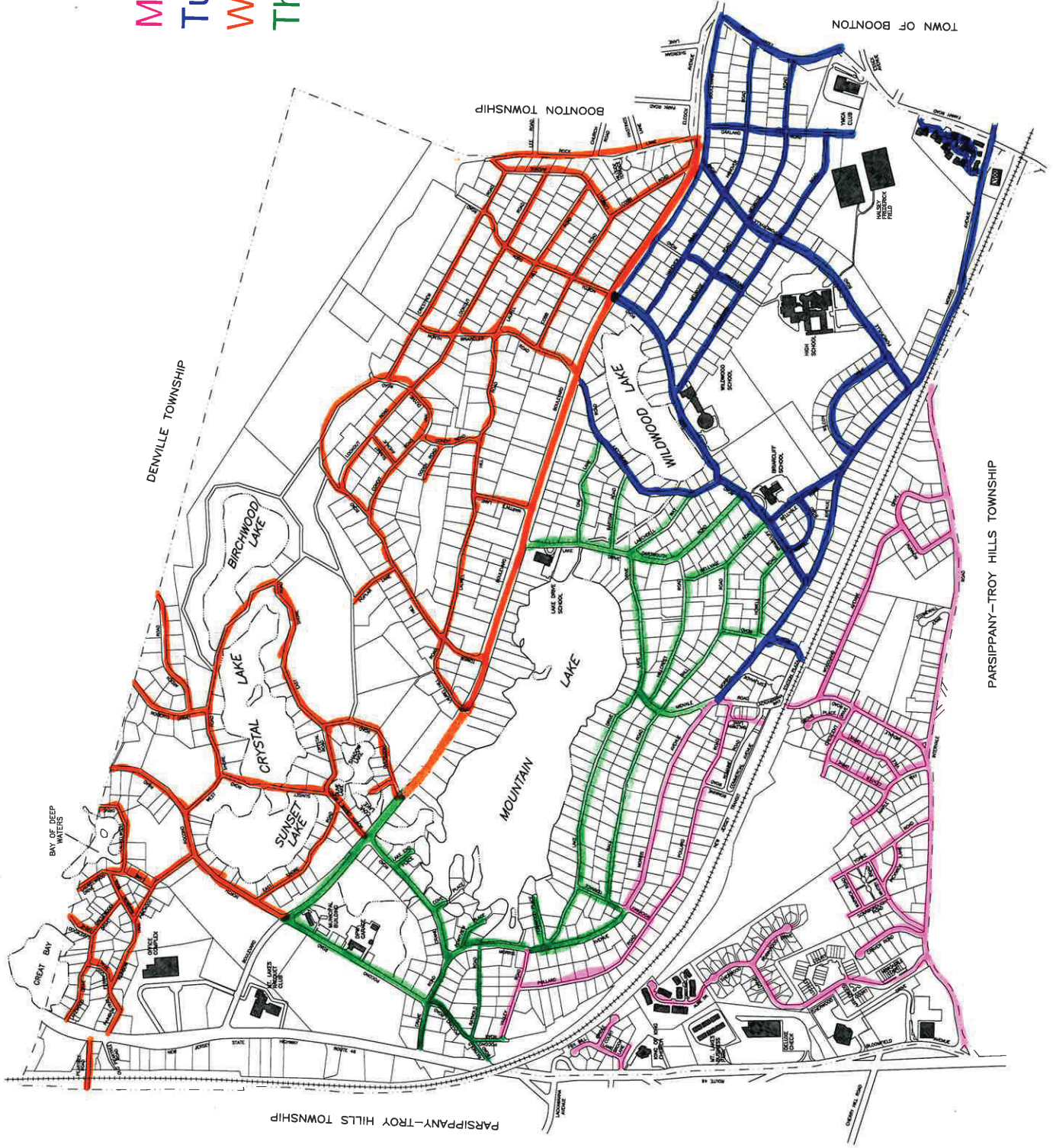
KEY

Monday – Pink

Tuesday – Blue

Wednesday – Orange

Thursday – Green



STREET MAP

Borough of Mountain Lakes
Morris County, New Jersey

Prepared by:
ANDERSON & DENZLER ASSOC.
Consulting Engineers
JUNE 14, 2018